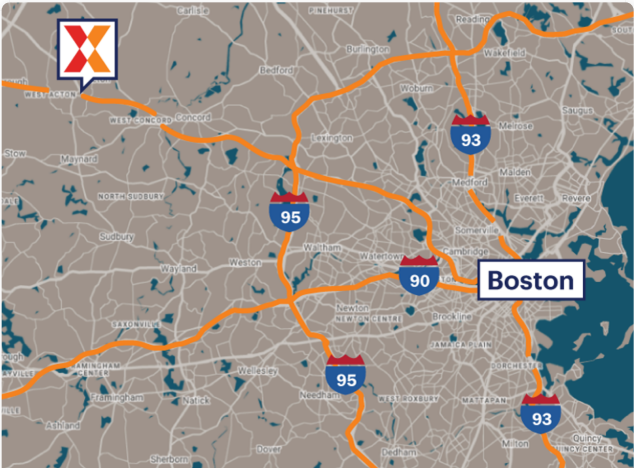
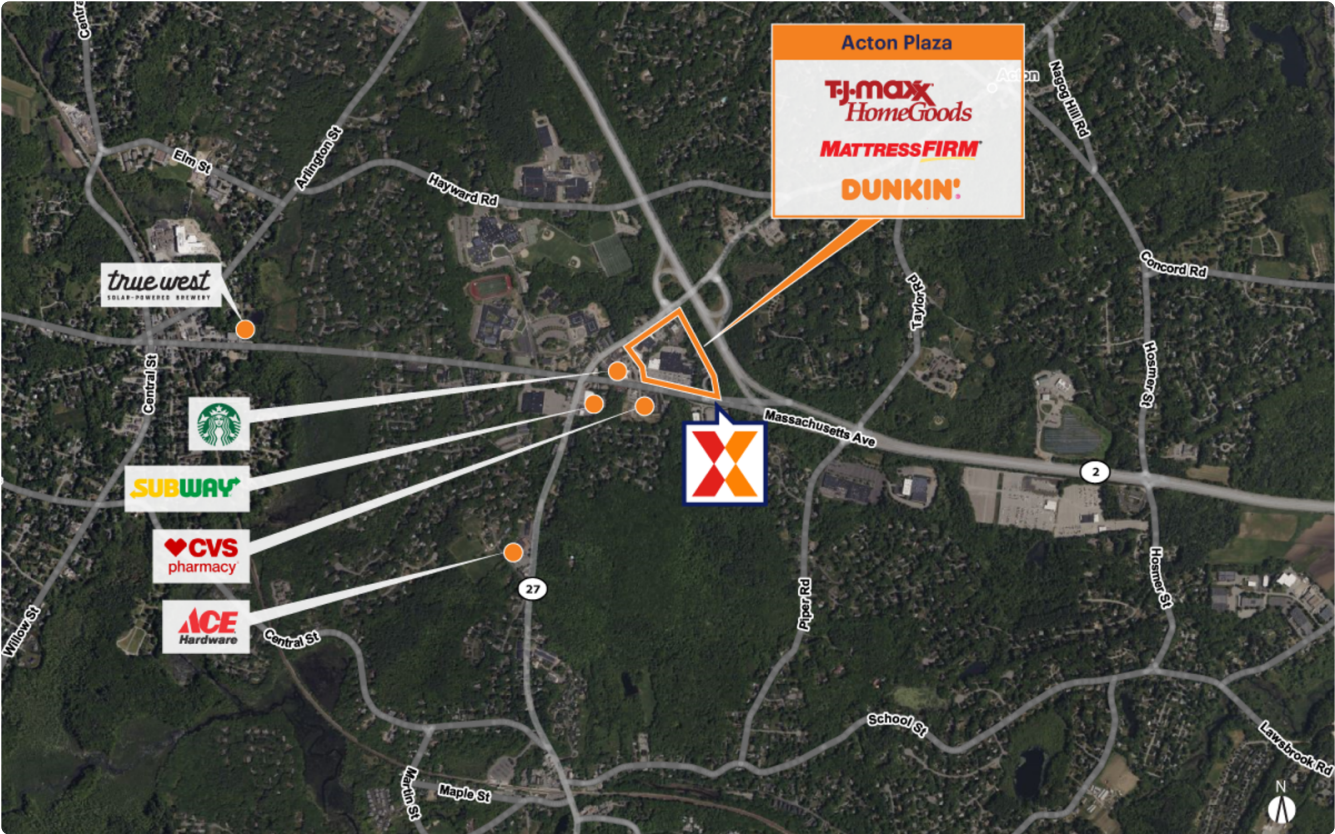


Acton Plaza

Middlesex County Boston-Cambridge-Newton, MA-NH 137,572 Sq Ft

291-307 Main Street | Acton, MA 01720

42.4755, -71.4500



Demographics	1 Mile	3 Miles	5 Miles
Population	3,847	33,681	69,185
Daytime Pop.	9,252	33,767	76,225
Households	1,344	12,599	26,263
Income	\$236,947	\$218,164	\$229,772

Source: Synergos Technologies, Inc. 2024

Benefit from traffic draw of strong national & regional retailers including Roche Bros., and T.J. Maxx/HomeGoods, The Paper store, Mattress Firm, and Chase Bank

Adjacent interchange with MA Highway 2, with over 37,000 vehicles daily, provides access to Boston and other communities (Kalibrate 2021)

Acton Plaza serves an affluent and highly educated trade area with average household income of \$197K+ and % college-educated persons of 73% within a 3-mile radius



Acton Plaza

291-307 Main Street | Acton, MA 01720

Middlesex County Boston-Cambridge-Newton, MA-NH 137,572 Sq Ft

42.4755, -71.4500

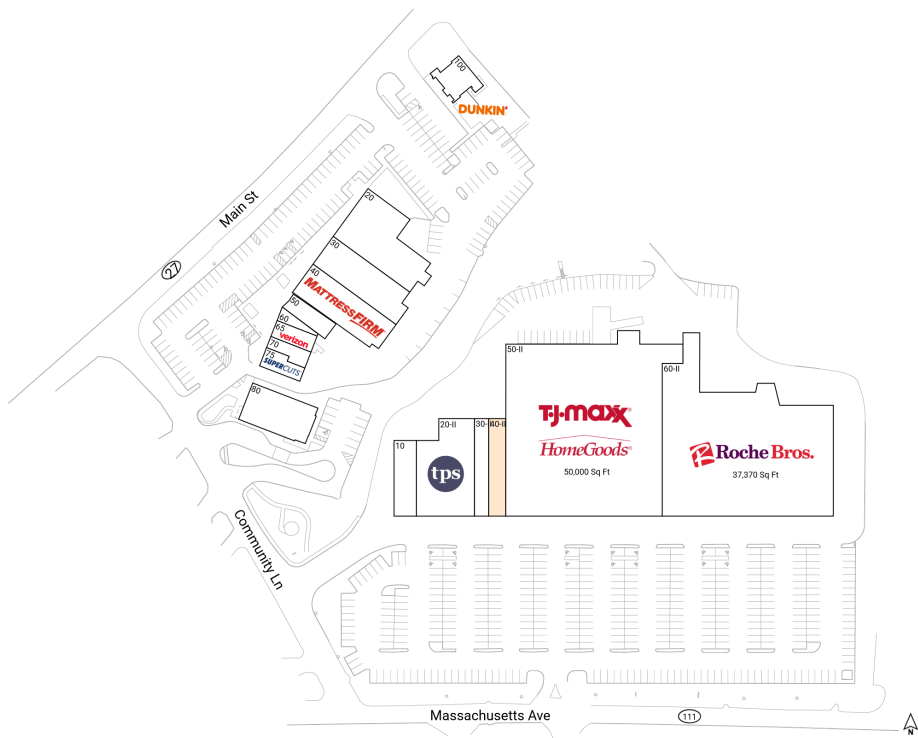
Available Spaces

40-II 2,990 Sq Ft 360°

Current Tenants

Space size listed in square feet

10	Achieve Physical Therapy	3,000
20	Acton Wine & Spirit Company	8,400
20-II	The Paper Store	9,463
30	Not Your Average Joe's	6,103
30-II	btone FITNESS	2,210
40	Mattress Firm	5,208
50	Santa Fe Burrito Grill	1,500
50-II	T.J. Maxx/HomeGoods	50,000
60	T.C. Lando's	748
60-II	Roche Bros.	37,370
65	Verizon Wireless	1,330
70	Unique Nails	1,053
75	Supercuts	1,329
80	Chase	4,943
100	Dunkin'	1,925



This site plan is for illustrative and information purposes only, showing the general layout of the shopping center; and is not a legal survey. Brixmor makes no representation or warranty that the shopping center is exactly as depicted as site conditions and tenant mix are subject to change over time.

1779

